

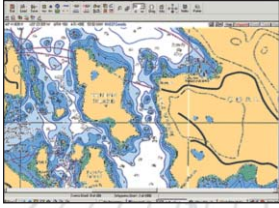
ComNav[®]



Mariner X2 Class B AIS Transceiver Automatic Identification System

Enhanced Safety and Security at Sea

- Safety — See and be seen using your on-board chart plotter
- Display graphically AIS target overlay on standard radars and multifunction chart displays
- Wireless exchange — Navigation status between vessels and shore traffic monitoring centers
- Vessel monitoring of Class A and Class B Transmissions over standard VHF frequencies
- Allows fleet of vessels to be efficiently monitored and port traffic better managed
- Type approvals: FCC, USCG standard in USA, R&TTE Europe, and IC in Canada
- IP67 waterproof enclosure design with marine grade connectors
- Small and rugged, shock and vibration resistant
- Standard NMEA 0183, NMEA 2000[®] and USB interface
- Silent mode — User selectable
- Built-in 50 channel GPS receiver complemented by an integrated GPS antenna
- Four LED status indicators
- Includes Pro AIS2 software for configuration and diagnostics
- Easily upgradeable through PC software via USB
- Meets CE requirements
- 1 year warranty
- Worldwide service



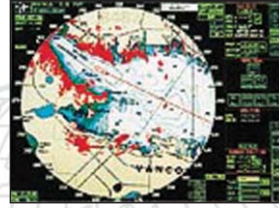
Safety

AIS improves safety on water through enhanced navigation awareness and reduces search and rescue times.



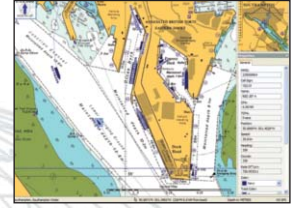
Security

AIS helps to identify and track vessels and improve border security. Improve coast guard response time by transmitting precise navigation data.



Vessel Monitoring

AIS enables automatic control and intruder or vessel movement alerts within designated areas.



Port Vessel Traffic Management

AIS enables port traffic management by using precise tracking and identification data.

SPECIFICATIONS:

Power: 12 to 24 VDC

Power Consumption: 150mA @12VDC, <2W average

CONNECTIONS

GPS Receiver: AIS internal
50 channels

IEC 61108-1 compliant

DATA INTERFACES

USB

NMEA2000®

IEC61162-1: NMEA0183 output, 38400baud

IEC61162-1: NMEA0183 input, 4800baud

Silent mode switch input

VHF TRANSCEIVER

Transmitter x 1 / Receiver x 2

Frequency: 156.025 to 162.025 MHz in 25KHz steps

Output power: 2W

Receiver sensitivity: <-110dBm @ 20% PER

USER INTERFACE

Four LED indicators for power, transmit timeout, error and silent mode

ENVIRONMENTAL

IPx7 rated for water ingress

IEC 60945 'Protected' category

Operating temperature: -15°C to +55°C

COMPLIANCE: FCC, USCG, R&TTE, IC, RoHs

Standards and Approvals

IEC62287-1 Edition 2

ITU-R M.1371-4

IEC60945 Edition 4

IEC61162-1/2 Edition 2

IEC61108-1

NMEA2000® Edition 2.20

Supplied with

2m power and NMEA0183 data cable

1m USB cable

proAIS2 configuration software

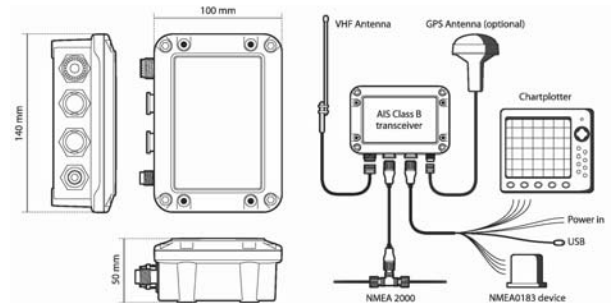
User manual and quick start guide

Fixing screws



DIMENSIONS: 140mm x 100mm x 50mm / 5.51" x 3.94" x 1.97"

WEIGHT: 280g



ADDITIONAL FEATURES:

- Supplied with configuration and set up software
- Data display for MMSI, vessel name, call sign, vessel type, etc.
- GPS display of position, COG and SOG
- GPS diagnostics and satellite signal bar chart
- Key status indicators
- Shows Transponder software and firmware version
- Displays receiver and transmitter statistics
- Displays Class A, Class B, base station and A to N target data
- Real time display for serial data output
- Ability to log data to file
- 12 watt transceiver available

ComNav®



ComNav Marine Ltd.

#15-13511 Crestwood Place,
Richmond, British Columbia • Canada • V6V 2G1

Phone: 604-207-1600 • Fax: 604-207-8008

E-mail: sales@comnav.com

www.comnav.com

Worldwide Service

Printed in Canada

Represented by: