

TG05

HIGH PRECISION TIDE GAUGE

kordil



Kordil TG05 is a high precision & high accuracy water level monitoring and logging system. Thanks to its low power consumption, easy installation and compact size, Kordil TG05 is being used in a lot of different application areas. It can be installed in areas or structures like sea, dam, natural and artificial lakes, rivers, water tanks etc. User can see the retrieved tide information on **Kordil MetOcean** software or in the log file where **\$KORDIL** messages from TG05 Tide Gauge are saved.

APPLICATIONS

Bathymetric, Hydrographic, Oceanographic Surveys,

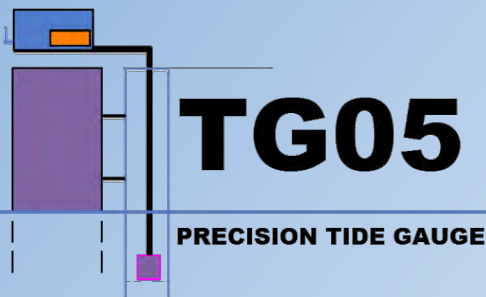
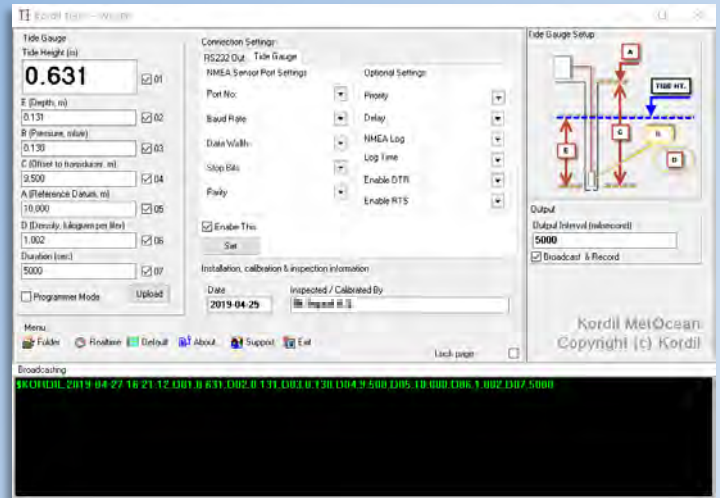
Offshore platforms, water tank observations,

Water level observation for cruise safety

Water level monitoring for dam and lakes

Mean sea level determination

Wave height and swell modelling



TG05

PRECISION TIDE GAUGE

batimetrstudio.com

İLETİŞİM BİLGİLERİ

Kordil Mühendislik Sanayi ve Ticaret Limited Sirketi
Cevizli Mahallesi, Hızır Reis Sokak, No: 10, Kat: 5,
Dragos Park Plaza, 34846 Maltepe, İstanbul
T: +90 216 344 6835 E-Posta: hk@kordil.com
Web: www.kordil.com.tr

TG05

HIGH PRECISION TIDE GAUGE

kordil



Robust and Lightweight
TG05 Case



Sensor (with 2-10
metre of cable)



RS232 Com.
Cable

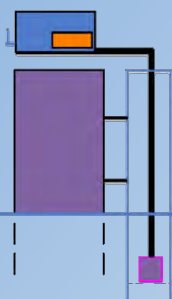


Power Cable
(Length is optional)

Tide data on your mobile device with SMS option!

Acquire tide data on your mobile phone momentarily with TG05.

Communication	RS232, 3G, Flash Disk, Dropbox
Operating voltage	External: 12V DC
Power consumption	5W
Operating temperature	-20° to +60° (Protect from direct daylight)
Sensor type	Hydrostatic Pressure Transducer, Material: Stainless Steel
Depth rate and environment	0-6 m H ₂ O
Accuracy	±0.1% full scale ±1cm (RMS)
Housing	High protection class ABS plastic case



TG05

PRECISION TIDE GAUGE

batimetrstudio.com

www.kordil.com.tr